



PREPARING STUDENTS FOR LIFE BEYOND THE CLASSROOM

est. 1991

# There are many WAYS TO GIVE

**Annual Gift**—A gift that supports the general operating costs needed to provide the highest quality of academic and therapeutic services for our students. Your gift ensures annual expenses are met so we can focus on the student's needs. It covers needs not met through tuition dollars.

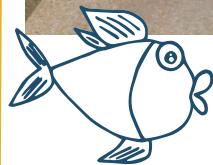
**Major Gift**—A gift of \$5,000 or more that supports either a specific project or general operating costs.

**Recurring Gifts** are made monthly to support general operating costs. This reliable source of income is especially impactful.

**Matching Gifts** are a great way to double your donation. Visit the donate page on our website to see if your employer provides matching gifts.

**Planned Giving**—The Dr. Geraldine Gibbia Legacy Society honors and celebrates planned giving contributions that benefit current and future generations of TPC students and their families. As a member of TPC's Legacy Society you will be an eternal supporter of our mission. Making a planned gift means promoting a sustainable future for our students with special needs and their families.

**Endowment** means establishing an account in which the earned interest is used to support the needs of The Phoenix Center. The needs can be general operating or allocated to a specific program or project.



# HOW YOUR GIFT SUPPORTS OUR MISSION



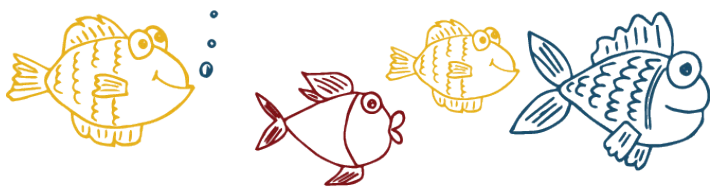
## FRIENDS OF THE PHOENIX CENTER FOUNDATION

A 501(c)(3) organization that solely supports The Phoenix Center





**YOUR GIFT TO FRIENDS OF THE PHOENIX CENTER FOUNDATION SUPPORTS NEEDS NOT COVERED BY TUITION DOLLARS, ENABLING US TO CONTINUE TO DELIVER SUPERIOR EDUCATIONAL EXPERIENCES AND THERAPEUTIC SERVICES.**



### **These include:**

- **New and upgraded technology** is a constant need. SMARTBoards are used regularly and in every classroom; technology such as Chromebooks and iPads are important for our students' academic success.
- **Extracurricular activities** such as yoga, horseback riding, bowling and gymnastics have therapeutic benefits, provide exercise and opportunities for students to bond with each other while out in the community.
- **Supported Employment & Community-Based Instruction programs** that partner with local businesses to realize The Phoenix Center's vision of preparing students for life beyond the classroom by providing opportunities to gain life skills and employment experience.
- **Family Support program** engages and supports families through outreach initiatives, support groups and family assistance services.
- **Capital needs** are supported and have included a new playground with shade structure; a new minivan; replacing broken or old equipment in our multi-sensory and physical therapy rooms; adding new therapeutic services such as Funtronic interactive floor system, multi-sensory room, surveillance cameras and more.

### **TO DISCUSS YOUR GIFT OPTIONS:**

Please contact Development Officer,  
Carolyn Sharaway, 973.542.0743, ext. 403  
or [csharaway@thephoenixcenternj.org](mailto:csharaway@thephoenixcenternj.org).

